



# Lutheran Social Services of Illinois

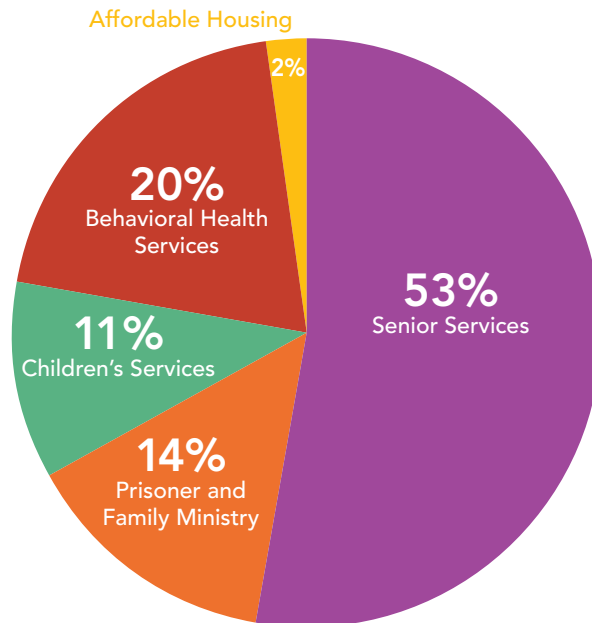


Founded 147 years ago, LSSI is the largest statewide provider of social services to those in need in communities across the state. In 2013, LSSI served more than 96,700 people, through 190 programs at 85 sites across Illinois.

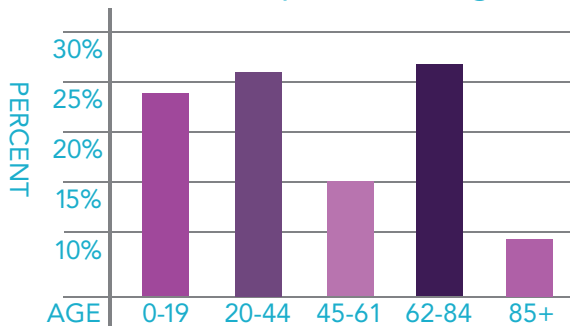
## Mission Statement

Responding to the Gospel, Lutheran Social Services of Illinois brings healing, justice, and wholeness to people and communities.

## We Help People Make Essential Changes in Their Lives Through These Services



## We Serve People of All Ages



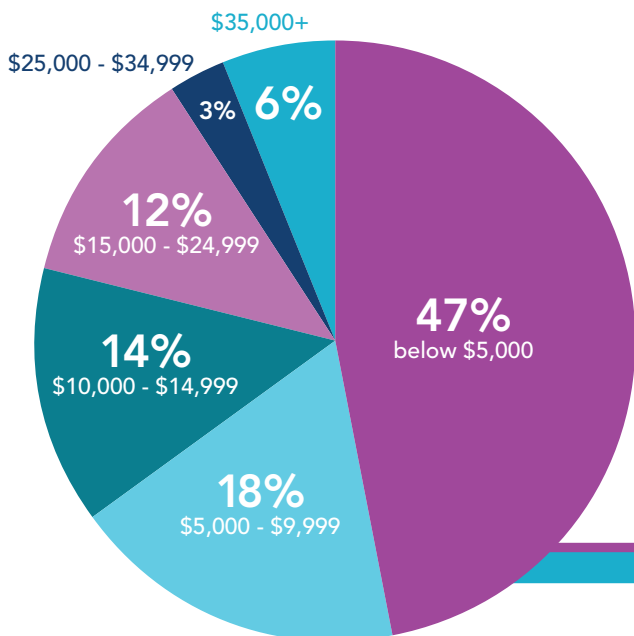
LSSI programs make a difference in people's lives, regardless of their age

## We Help Older Adults Remain Independent Senior Services - Intouch Home Care

Through our Senior Services, LSSI provides the support aging adults need to remain in their homes with the highest level of independence. These services include housekeeping, laundry, personal care, medication reminders, meal preparation, and transportation to appointments.



Home Care Provided to 1,971 Clients



We Serve People in Poverty

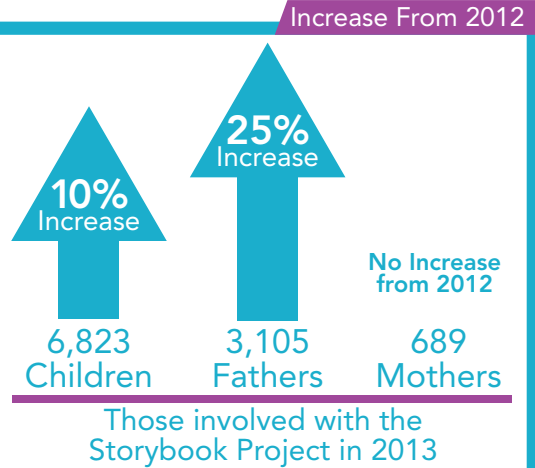
# 47%

of People Served Have an Annual Income Under \$5K

# We Keep Children and Parents Connected

Prisoner and Family Ministry - Storybook Project

LSSI's Storybook Project is often the only connection between children and their parent who is incarcerated. Listening to a CD of their parent's voice reading them a story assures children that their parent still cares, and hasn't forgotten them. As a result, 92% of parents who are repeat participants in the Storybook Project said they believe the program has helped strengthen their family connection.



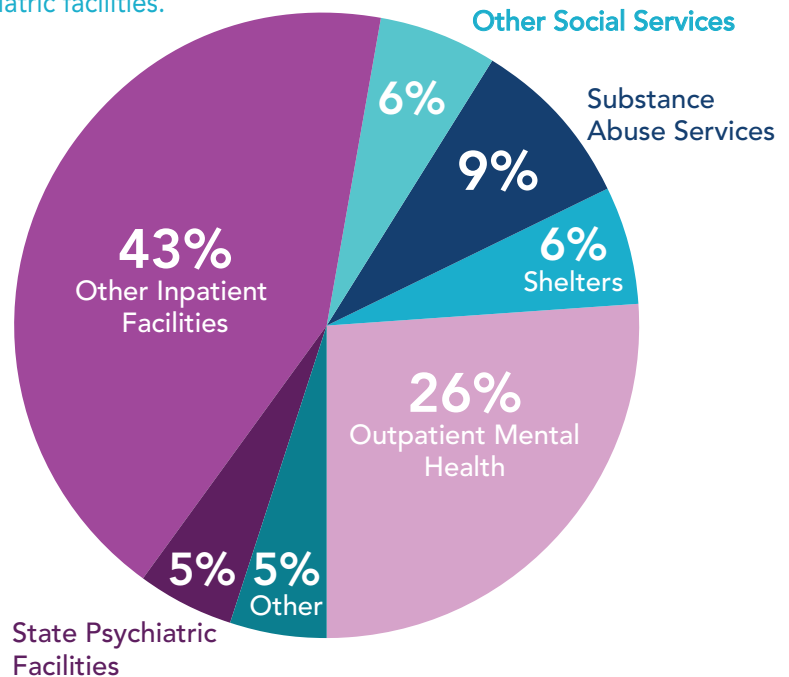
## We Help People in Crisis

Behavioral Health Services - Project IMPACT

Through Project IMPACT, LSSI has crisis workers available 24/7 on-site at Swedish Covenant Hospital to stabilize individuals who present at the hospital's ER with mental health or substance abuse issues. One of the program's primary objectives is to reduce the number of inappropriate admissions to state psychiatric facilities.

**95%** of clients were connected with alternative, cost-effective, community resources, which is a 5% increase from one year ago. As a result, only 5% were admitted to state psychiatric facilities.

The chart to the right shows a breakdown of services to which clients were referred.



## We Help Children in Foster Care Tell Their Story

Children's Community Services - Lifebook Program

Children entering the child welfare system experience multiple losses. LSSI's Lifebook Program helps children create a healing bridge from the past to the present. Similar to a scrapbook, Lifebooks contain vital information from a foster child's life, with room for photographs, artwork, and their thoughts. Lifebook-trained specialists provide individual guidance to children and foster parents. Children keep their Lifebook, which is an ongoing connection to their past that provides hope and insight for the future.

Through LSSI's commitment to providing Lifebooks to foster children in our care, Lifebooks have been distributed to more than 3,700 children since 2009.



Lutheran Social Services of Illinois



All outcomes represent information from July 1, 2012 to June 30, 2013.